



**COMMUNITY DEVELOPMENT
AND RESOURCES
COMMISSION
OF THE
CITY OF ATWATER**

RESOLUTION NO. 031-17

**A RESOLUTION OF THE COMMUNITY DEVELOPMENT AND
RESOURCES COMMISSION OF THE CITY OF ATWATER
RECOMMENDING DISESTABLISHMENT OF THE 171.4-
ACRE FERRARI RANCH FROM THE MERCED COUNTY
AGRICULTURAL PRESERVE**

WHEREAS, the 171.4-acre Ferrari Ranch property is within the Merced County Agricultural Preserve (agricultural preserve) as shown in [Attachment A](#); and,

WHEREAS, pursuant to the California Environmental Quality Act, the Community Development and Resources Commission adopted Resolution No. 027-17 on _____ which recommended that the City Council certify the Ferrari Project Final Program Environmental Impact Report (EIR) State Clearinghouse No. 20141011045, incorporated herein by reference, as adequately prepared in compliance with CEQA; and,

WHEREAS, through adoption of Resolution No. 028-17 on _____ the Community Development and Resources Commission recommended approval of a General Plan Amendment, amending the land use designation for Ferrari Ranch to Business Park; and,

WHEREAS, through adoption of Resolution No. 029-17 on _____ the Community Development and Resources Commission recommended approval of rezoning Ferrari Ranch as Planned Development (PD) with a Business Park (BP) Overlay; and,

WHEREAS, through adoption of Resolution No. 030-17 on _____ the Community Development and Resources Commission recommended approval of the initiation of annexation proceedings for a 358.79-acre Annexation Area which includes the 171.4-acre Ferrari Ranch site; and,

WHEREAS upon LAFCO approval of the proposed annexation of the Annexation Area, including Ferrari Ranch, into the city limits of Atwater, the City of Atwater will acquire jurisdiction over the Ferrari Ranch site; and,

WHEREAS by acquiring jurisdiction over the Ferrari Ranch site the City of Atwater shall have all the rights and responsibilities specified in the California Land Conservation Act of 1965 for cities including the right to disestablish an agricultural preserve within its jurisdiction, the disestablishment which would become effective upon LAFCO's approval of the annexation (California Government Code Section 51235); and,

WHEREAS the City has followed all procedural requirements of the California Land Conservation Act for disestablishment of Ferrari Ranch from the agricultural preserve.

NOW THEREFORE BE IT RESOLVED that the Community Development and Resources Commission hereby recommends disestablishment of the 171.4-acre Ferrari Ranch property from the Merced County Agricultural Preserve to become effective upon LAFCO approval of the annexation of the 358.79-acre Annexation Area, within the meaning of and pursuant to the California Land Conservation Act of 1965, subject to the policy and rules specified therein.

The foregoing resolution was introduced at a regular meeting of the Community Development and Resources Commission of the City of Atwater held on the ___ day of ___, by City Commissioner ___, who moved its adoption, which motion was duly seconded by City Commissioner ___, and Resolution No. 031-17 was adopted by the following vote:

AYES: XXXX
NOES: XXXX
ABSENT: XXXX

APPROVED:

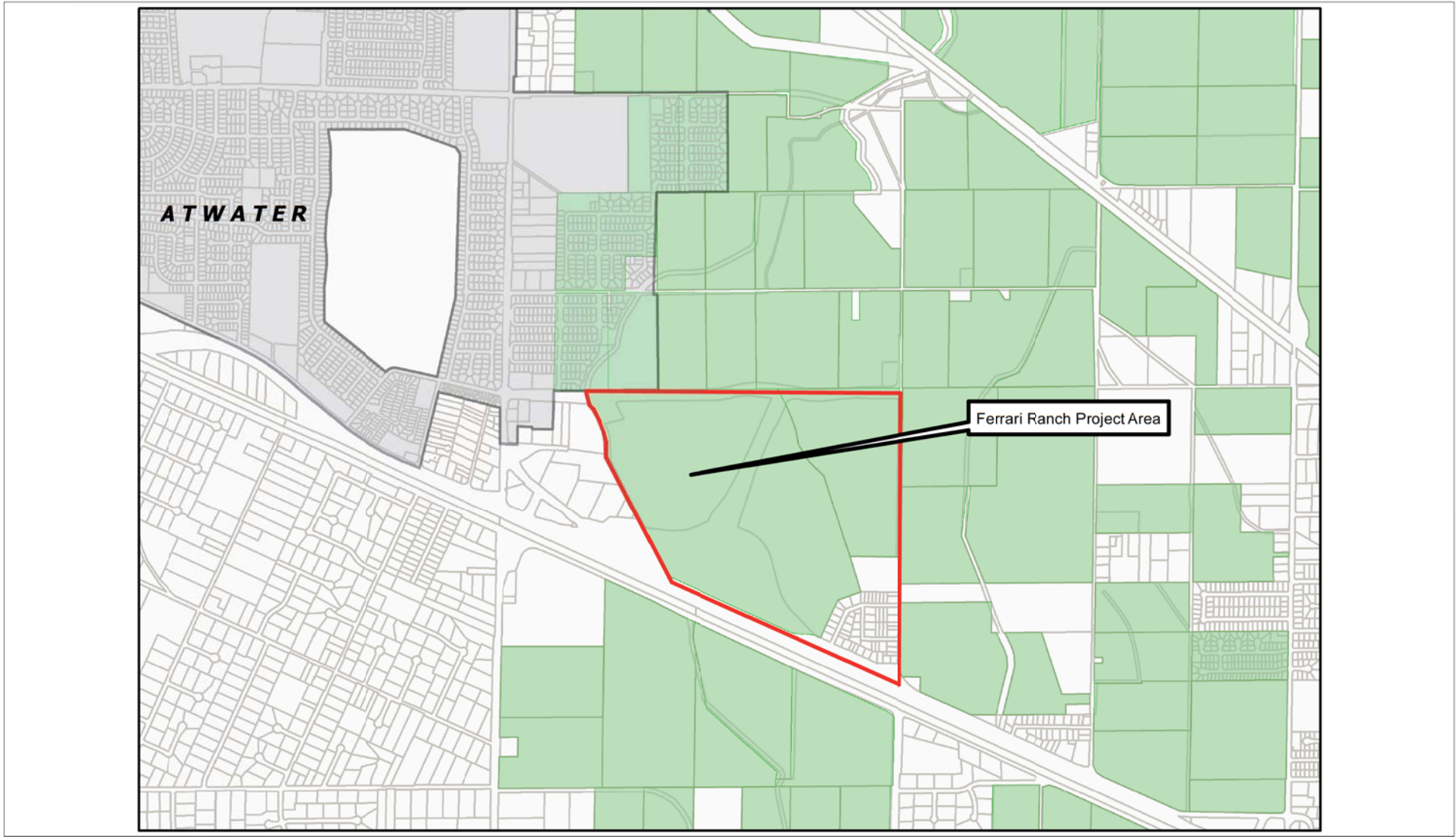
ATTEST:

ATTACHMENT:

Attachment A Ferrari Ranch Site within the Merced County Agricultural Preserve Area

**AGRICULTURAL PRESERVE RESOLUTION
ATTACHMENT A**

MERCED COUNTY AGRICULTURAL PRESERVE MAP



Source: Merced County 2016



Ferrari Ranch Site within the Merced County Agricultural Preserve Area

