



PG&E Gas Main Inspection @ N. Winton & Atwater Blvd.

Fact sheet

Project Overview Map



(Above) This is a map of the minimized workspace PG&E proposes to utilize throughout construction. Outside of construction hours, all equipment and materials will be stored offsite. (Below) A depiction of the proposed traffic control. All travel lanes will remain open except for the right hand turn from eastbound Atwater Blvd due to turn radius of the corner.

PG&E commits to the following actions to minimize impact to the city and public:

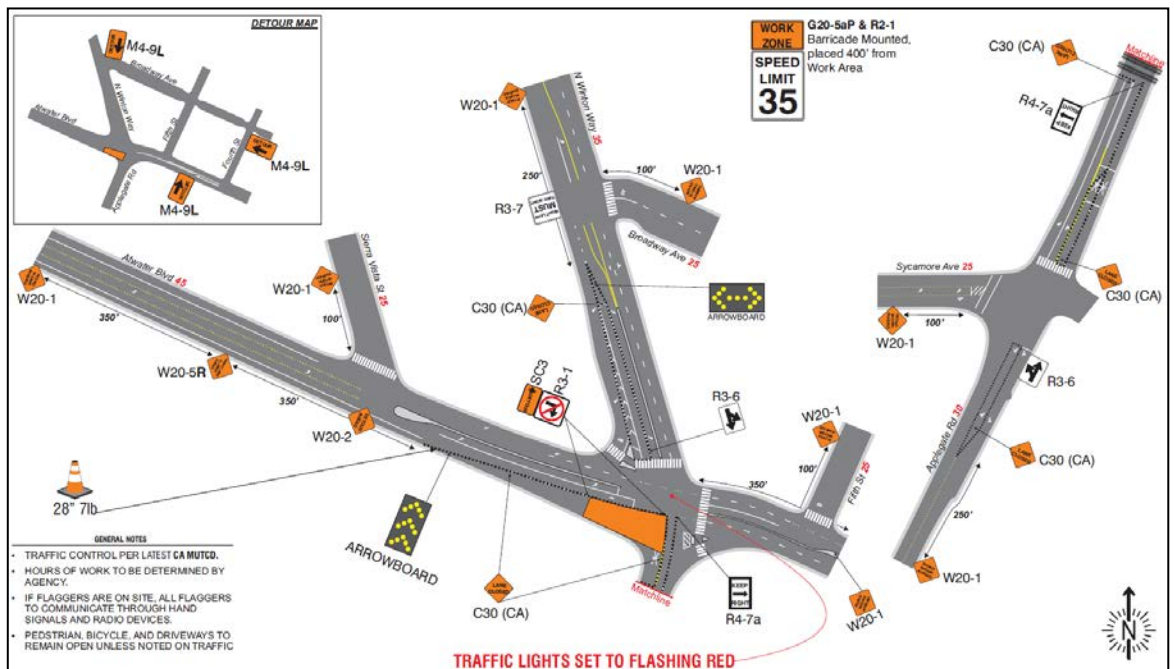
- Work only at night in timeframe approved by the city, from Sunday night to Thursday night. 7pm-5am
- All traffic control will be removed at the end of work and excavations will be plated for safe travel.
- All Businesses and residents in the area will receive a PG&E letter notifying them of the project. Automated calls will go out a couple of days in advance as a reminder.
- Notice will be posted on the city's official website.

About the project

Every 5-7 years federal regulation (CFR-49) requires that utility operators inspect their gas assets for external corrosion to insure pipeline safety. Certain locations are selected that have a high probability for external corrosion of the pipeline. This is routine maintenance work that will not affect service and most repairs result in buffing the line clean and repairing any coating issues.

Our inspection will be in the intersection of N. Winton Way/Applegate Road and Atwater Blvd. Heavy machinery will be used to help expedite excavation and assist with inspection and resulting repairs. Traffic control will be utilized to ensure the safety of construction workers and the public.

Construction typically lasts 4-6 weeks depending on unforeseen conditions and complications such as other utilities, work hour restrictions, and severity of repairs. We are hoping to begin construction in mid-April. Exact date that construction will begin will be determined by the City Administration and the City Inspector.





April 24, 2019

We will begin inspecting our natural gas pipeline in your neighborhood. Please read for more information.

«CUSTOMER_NAME»
OR CURRENT OCCUPANT
«PREM_ADDRESS2»
«PREM_ADDRESS1»
«PREM_CITY» «PREM_STATE» «PREM_POSTAL»

Dear Valued Customer:

Pacific Gas and Electric Company (PG&E) will be in your neighborhood inspecting sections of our underground natural gas pipeline. This is part of our system-wide program to ensure the safety of the transmission pipelines that deliver gas across the region. We will be working at the intersection of Atwater Boulevard and Applegate Road in Atwater. We expect work to start in mid-April and continue until mid-July. Weather and other factors affecting safe working conditions may impact our schedule. The pipeline inspection project is part of our commitment towards providing safe, reliable and affordable natural gas service to our customers.

What you can expect

This inspection involves excavating around parts of the pipeline and visually inspecting the pipeline and its exterior coating. With this information and other pipeline safety data, engineers analyze the pipe’s condition and identify potential corrosion. If a section of pipe does not meet safety standards, it will be repaired or replaced with new pipe.

Our work should not interrupt your gas service, but we will contact you directly if there are any changes. You may hear a loud steady noise and notice the smell of natural gas as we empty the pipeline in a controlled and safe manner. This is normal when crews are working, but we encourage anyone who has concerns to call us at **1-800-743-5000**.

Traffic impacts

Crews will be working at night and in the early morning hours Sunday through Thursday from 7:00 p.m. until 5:00 a.m. There will be a lane closure and shift in place at the intersection of Atwater Boulevard and Applegate Lane. PG&E will clearly mark all work areas, and traffic flaggers will help to direct traffic. Please plan for minor delays when driving through this area. Traffic controls will be removed when we are not actively working.

Your local contact if you have questions

We encourage you to contact your local PG&E representative **Sarah Faridi at 209-576-6670** or email gasprojectinfo@pge.com. This letter requires no action on your part. Safety is at the heart of everything we do—we appreciate your patience as we enhance the pipeline safety and reliability in your neighborhood.

Sincerely,

David Meier
Stockton & Yosemite Division Senior Manager
Pacific Gas and Electric Company

PRE_ICDA-ECDA- D-994A 84008461

For more information on pipeline safety programs, call our **Gas System Help Line at 1-888-743-7431**
Visit pge.com/gas to learn about PG&E’s natural gas system

⋮ **Dig safely. Call 811 first.**
⋮ Visit pge.com/811
⋮ for more information.



Pacific Gas and Electric Company (PG&E, por sus siglas en inglés) estará en su vecindario inspeccionando secciones de sus tuberías subterráneas de gas natural. Esto es parte de nuestro amplio programa para mejorar la seguridad de las tuberías que distribuyen gas a lo largo de la región.

El clima y otros factores que afecten la seguridad en las condiciones de trabajo, podrían impactar nuestro horario programado. El proyecto de inspección de tuberías es parte de nuestro compromiso para proveer a nuestros clientes de un suministro de gas natural que sea seguro, confiable y asequible.

Qué puede ocurrir

Esta inspección implica excavar alrededor de algunas partes de la tubería y realizar una inspección visual de la misma y de su recubrimiento exterior. Con esta información y otros datos de seguridad de la tubería, los ingenieros analizan la condición de la misma e identifican potencial corrosión. Si la sección de la tubería no cumple con el estándar de seguridad, será reparada o reemplazada con una tubería nueva.

Nuestro trabajo no debería interrumpir su servicio de gas, pero lo contactaremos directamente si hubiera algún cambio. Usted podría oír un ruido fuerte y constante y sentir olor a gas natural mientras el gas se descarga de manera controlada y segura. Esto es normal cuando el personal está trabajando, pero invitamos a cualquier persona que tenga alguna inquietud a que nos llame al **1-800-660-6789**.

Pacific Gas and Electric Company (PG&E) 將會在您所住地區檢查部分地下天然氣管線。這是我們全系統計劃的一部分，目的是確定本區輸送煤氣的傳輸管線安全無損。氣候變化和影響安全作業的其他因素有可能衝擊到我們的時間表。我們承諾提供安全、可靠及可負擔的天然煤氣，而管線檢查就是實現承諾的工作之一。

預計進行工作

這項檢查工作包括在部分管線附近進行挖掘，並目視檢查管線及其外表塗層。有了這類資訊及其他管線安全資料，工程師可分析管線狀況，並找出可能腐蝕的地方。如果部分管線不符合安全標準，我們將會進行修理或以新管線取代。

我們的工作應該不至於中斷您的天然氣服務，但如果有任何變化，我們將與您聯繫。當我們以經過控制的安全方式放空管線天然氣時，您可能會持續聽到響亮的嘶嘶聲，並察覺到天然氣的味道。在工作人員工作時，這是正常現象，但我們鼓勵任何有疑慮的人打電話到**1-800-893-9555** 跟我們聯繫。

Kung kailangang makipag-usap sa nakakasalita ng Tagalog, tumawag sa **1-888-743-7431**.

Để được giúp đỡ bằng tiếng Việt, xin gọi **1-800-298-8438**.